

MΔC

Museum of Art and Culture
Lake Macquarie

SCULPTURE PARK

Discovery Trail
for families



Starting the trail

Welcome

This trail guides you on a fascinating journey through the Sculpture Park at Museum of Art and Culture (MAC).

You'll need to **SEARCH**, **LOOK** and **DRAW**.

Whichever way you go, enjoy yourself.



COLLECT
a pencil



GO
on a journey



DISCOVER
the sculptures



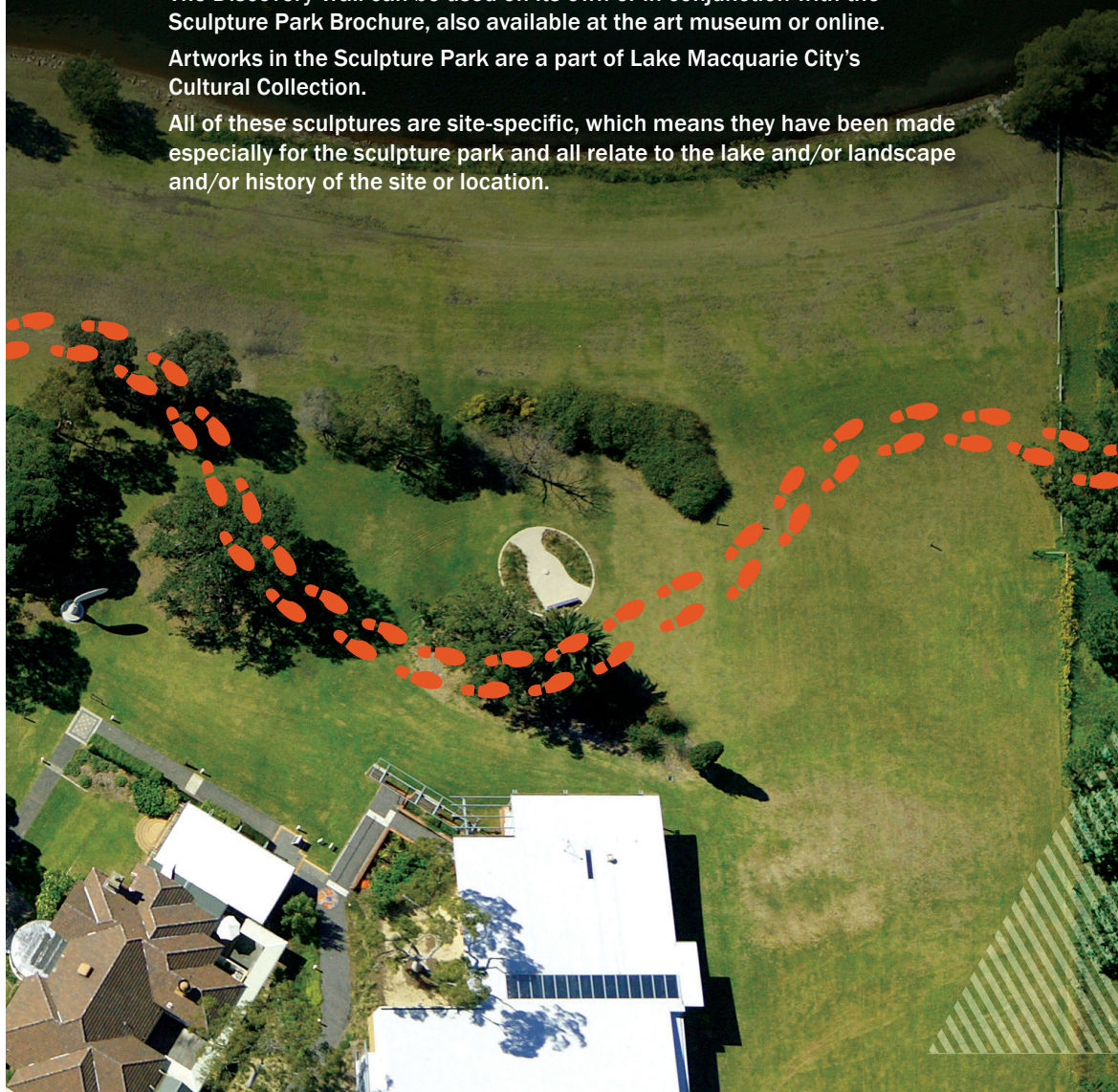
THE EARTH
THE EARTH
THE EARTH
THE EARTH
THE EARTH
THE EARTH
THE EARTH
THE EARTH
THE EARTH
THE EARTH

This Discovery Trail is available online or as a free printed booklet at the art museum. It has been designed to engage young people with the artworks in the sculpture park, either on their own, in a group, or with adults.

The Discovery Trail can be used on its own or in conjunction with the Sculpture Park Brochure, also available at the art museum or online.

Artworks in the Sculpture Park are a part of Lake Macquarie City's Cultural Collection.

All of these sculptures are site-specific, which means they have been made especially for the sculpture park and all relate to the lake and/or landscape and/or history of the site or location.



Find your
way around **P**

FIRST STREET

Start your
journey here

3

11

P

Now go
into the
art museum
and look at
the other
artwork

4



TREVOR WEEKES



SUSAN MORRIS

3

TED PRIOR



GRAHAM GILCHRIST

5

BRADDON SNAPE



RICHARD TIPPING



JOHN TURIER



FATU FEU'U



THE MEETING PLACE

10

**AWABAKAL
DREAMING**

11

PATHWAY MOSAICS



JANET LAURENCE

13

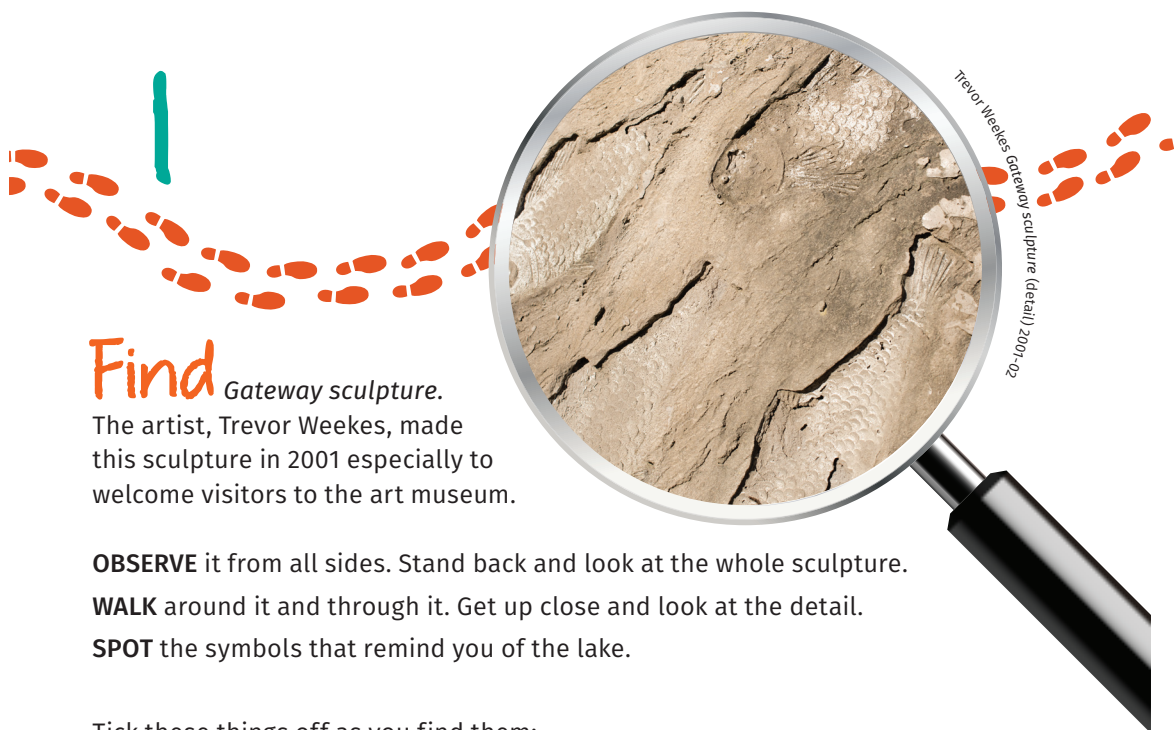
NIGEL HELYER

14

RICHARD TIPPING

15

JAMIE NORTH



Find *Gateway sculpture.*

The artist, Trevor Weekes, made this sculpture in 2001 especially to welcome visitors to the art museum.

OBSERVE it from all sides. Stand back and look at the whole sculpture.

WALK around it and through it. Get up close and look at the detail.

SPOT the symbols that remind you of the lake.

Tick these things off as you find them:

☐ FISH ☐ ROCK ☐ RIPPLES ☐ BOAT ☐ ROD ☐ MOORING POST

IMAGINE you are the artist.

WRITE a short story about how you made the impressions of the fish and the ripples.



Search for a sculpture with large shiny rings.

It is called *Moon and Tide*. The artist, Susan Morris, was interested in the connection between the moon and the tides.

WALK around it. **LOOK** through it.

Which part of the sculpture reminds you of the moon?

Close your eyes and **IMAGINE** how the moon looks.

Is it always the same? ☐ YES ☐ NO

If the rings represent the moon, how many moon shapes can you see?

Which part of the sculpture do you think represents the tide?

Does the tide stay the same?

☐ YES ☐ NO

FIND the fish swimming in the water.

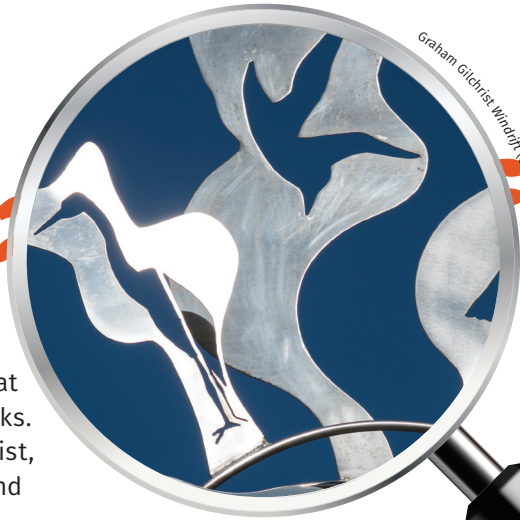
IMAGINE you are the artist. What would your fish design look like?

DRAW it in the box.

Susan Morris *Moon and Tide* (detail) 1998



3



Locate the sculpture that looks like industrial chimney stacks. The artist, the late Graham Gilchrist, was concerned about pollution and the natural environment.

READ the label to find information. What is the artwork called?

DESCRIBE the parts of the sculpture that remind you of pollution.

How many birds can you see in the sculpture?

Why do you think there are birds in the sculpture?

DRAW

a bird shape and decorate it in your own way.

Find a sculpture that reminds you of a 'wordfinder'.
The artist, Richard Tipping, is interested in artworks that are made using words.

SEARCH for the giant letters on the ground and walk around them in a clockwise direction.

WRITE down as many words as you can find.

HEART HEART HEART
HEART HEART HEART
HEART HEART HEART

Richard Tipping Hear the art (detail) 1996



From where do you think you could get the best view of this artwork?

Try to solve this riddle and circle your answer below.

What am I? 'I spy with my little eye a poem as I fly by'

FISH BIRD COW SNAKE

5

John Turrier Aeolion tree (detail) 2001

Find the sculpture that reminds you of a sail. The artist, John Turrier, named this sculpture after the ancient Greek god of the winds, Aeolus.

READ the words on the base of the sculpture.

OBSERVE the top part and see if you catch it moving.

What do you think makes it move? Circle your answer.

PEOPLE ELECTRICITY WIND

CHOOSE the natural element that you think this sculpture relates to the most. Circle your answer.

EARTH WIND WATER FIRE



Locate the sculpture that looks like it may be guarding the lake. The artist, Fatu Feu'u, is Samoan and has made a sculpture of Tanifa, son of Tagaloa, a Polynesian god.

What materials do you think the artist used?

Fatu Feu'u Tanifa O Tagaloa (detail) 2003



LOOK closely and consider how this sculpture was made.

TOUCH the sculpture.

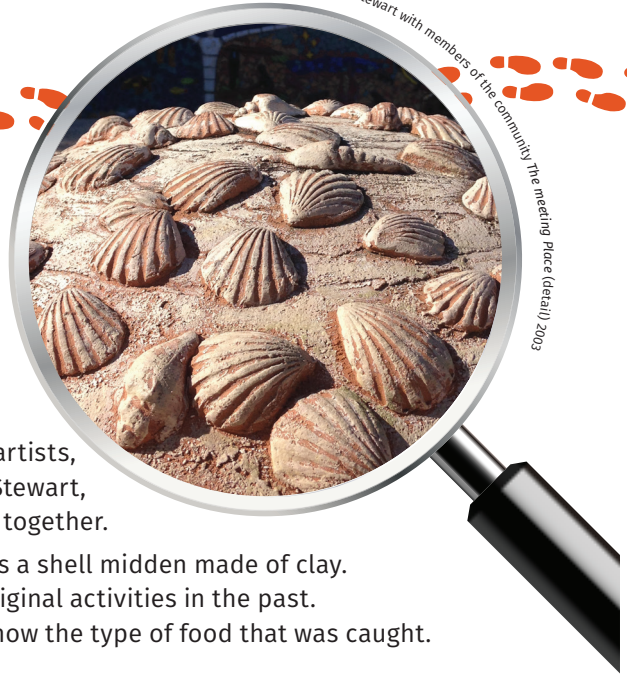
WRITE down the tools you might use to make a sculpture like this.

COMPLETE the drawing of the sculpture.

ILLUSTRATE its location and surrounding landscape. You might even draw some boats in your artwork.



The late Jim Ridgeway and Sue Stewart with members of the community The meeting Place (detail) 2003



Find *The meeting place.*

It is a special place in the sculpture park. It was made by Aboriginal and non-Aboriginal people together with artists, the late Uncle Jim Ridgeway and Sue Stewart, to symbolise the two cultures coming together.

One of the features of this sculpture is a shell midden made of clay. Shell middens tell us a lot about Aboriginal activities in the past. The types of shells in a midden can show the type of food that was caught.

SEE what looks like a shell midden.

THINK about what food you could catch in the lake.

WRITE them all down.

THINK about what other activities people do in and around the lake.

WRITE them all down.



There is a sculpture called *Ghost* in the sculpture park.
The artist, Janet Laurence, made the sculpture to remember a lemon-scented eucalyptus tree that once stood in the art museum's garden.
Do you know where the sculpture is? There is a clue below.

COMPLETE the poem by connecting the text line to the appropriate word.

Once there was a gum tree loved by

FALL

It's leaves were green. It's trunk was

WALL

When it was unwell, it's branches did

ALL

Now it is remembered on the art museum

OBSERVE the reflections and shadows in the sculpture.

DRAW some of the shapes you can see.

OVERLAP them to make your own design.


Janet Laurence *Ghost* (detail) 2009



A large teal number 9 is positioned at the start of a trail of orange footprints that leads from the left margin into the main content area.

Consider what the lake means to you.

DESIGN your own sculpture for the sculpture park.
You can finish it at home if you run out of time.

A trail of orange footprints starts from the right margin and leads towards the center of the page, ending near the text.A large, empty rectangular box with rounded corners and an orange border, intended for drawing or writing a design.



The logo for Lake Macquarie City, featuring the words "LAKE MACQUARIE CITY" in white capital letters on a black rectangular background.

LAKE
MACQUARIE
CITY

The logo for the Museum of Art and Culture (MAC), featuring the letters "M" and "C" in black with an orange triangle between them.

MΔC

Museum of Art and Culture
Lake Macquarie

First Street, Booragul NSW 2284

☎ 02 4921 0382

✉ mac@lakemac.nsw.gov.au

🌐 mac.lakemac.com.au