

Art Adventure Tour to Canberra 2022

4-6 May

Visit

Seven Art Exhibitions in three days with Lake Macquarie MAC Society

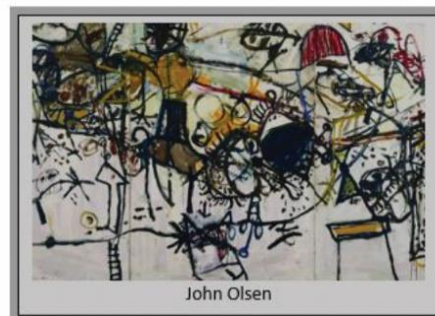
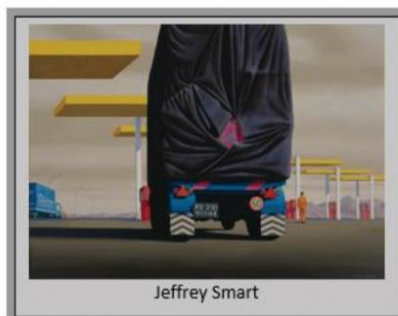
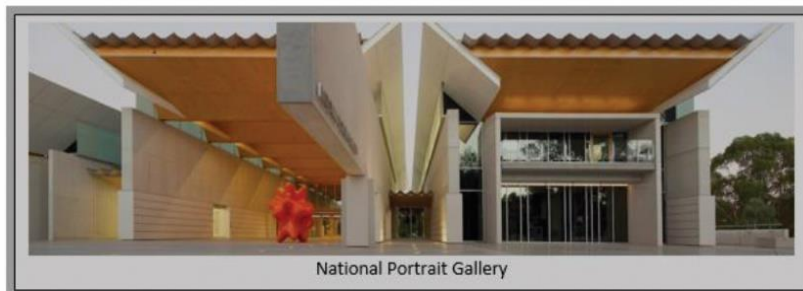
Luxury 54 seat coach, two nights' accommodation at Canberra's Forrest Hotel,
Set dinner on 5 May at Ondine European Brasserie.
Exhibition entries included.

In Canberra:

National Portrait Gallery **Shakespeare to Winehouse**, icons from National Portrait Gallery, London;
National Gallery of Australia comprehensive **Jeffrey Smart** exhibition,
Know My Name Australian women artists, and **National Indigenous Art Triennial: Ceremony**;
National Library of Australia, Treasures Gallery reference to: including **Circus! Roll up! Roll up!**

En route:

Campbelltown Arts Centre **Current Exhibitions (Yirran Miigaydhu: Weaving; Maryanne Wick: Place and Time; Macarthur Ceramics Group)** and Japanese Garden;
Ngununggula/ Southern Highlands Regional Gallery **John Olsen: Goya's Dog exhibition.**



Fantastic Value!

Cost per person, with accommodation: \$650 (double occupancy), \$770 (single occupancy).

Deposit at once: \$150 per person, to secure your booking (non-refundable)

Final payment by 20 April 2022.

Deposit and final payment to Westpac, BSB 032 521, Account Number 107272 (MAC Society).

Include Name (or member number) & code CB1 (Canberra single) or CB2 (Canberra double) with each payment.

Immediately Notify Treasurer Hanneke (0410 177 553) of each **Payment, Contact info & Pickup Point.**

MAC Society is a volunteer not-for-profit association supporting art and culture in our community,
especially exhibitions and the collection at the MAC yapang

Art Adventure Tour to Canberra 2022

4-6 May

Visit

Seven Art Exhibitions

in three days with

Lake Macquarie MAC Society

Itinerary (subject to possible minor adjustments, to be advised)

Wednesday 4 May

- 0600 Collect: Maitland Regional Art Gallery, 230 High Street, Maitland [Pickup point: MRAG]
0700 Collect: Newcastle Art Gallery, 1 Laman Street, Cooks Hill [Pickup point: NAG]
0740 Collect: Museum of Art and Culture *yapang*, 1 First Street, Booragul [Pickup point: MAC]
1130 Collect: Railway Station, Campbelltown [Pickup point: RSC]
1140 Arrive: Campbelltown Arts Centre:
Rest stop. View current exhibitions — Maryanne Wick; Yirran Miigaydhu; Macarthur Ceramics Group. Japanese Garden.
Light lunch in Arts Centre Café (own expense)
1340 Depart: Campbelltown Arts Centre
1640 Arrive: Forrest Hotel, Canberra
1800-2000: *Dinner (own expense)*

Thursday 5 May

- 0730 Hotel: Breakfast pack (*included in accommodation*)
0945 Depart: Forrest Hotel
1000 Arrive: National Portrait Gallery:
View exhibition Shakespeare to Winehouse (National Portrait Gallery, London).
Light lunch in Portrait Café (own expense)
Walk across road to NGA, arrive about 1320.
1330-1630: National Gallery of Australia:
View three exhibitions
1330 View Jeffrey Smart
1430 View Know My Name
1515 *National Indigenous Art Triennial*
1600 *Free roaming*
1630 Depart: NGA for Forrest Hotel
1745 Depart: Forrest Hotel and Apartments, Forrest, for Ondine European Brasserie.
Group Dinner (pre-ordered and prepaid, included in excursion cost)
2000 Depart: Ondine for Forrest Hotel

Friday 6 May

- 0730 Hotel: Breakfast pack (*included in accommodation*)
0845 Depart: Forrest Hotel
0900 Arrive: National Library
View Treasures Gallery, incl. Circus: Roll Up!
National Library Café for Refreshments (own expense)
1030 Depart: National Library
1300 Arrive: Ngununggula/Southern Highlands Regional Gallery, Bowral
View John Olsen exhibition. Gallery Café for light lunch (own expense)
1500 Depart: Ngununggula/SHRG, Bowral
1600 Arrive: Railway Station, Campbelltown [Setdown point: RSC]
1850 Arrive: Museum of Art and Culture *yapang*, Booragul [Setdown point: MAC]
1930 Arrive: Newcastle Art Gallery, Civic [Setdown point: NAG]
2030 Arrive: Maitland Regional Art Gallery, Maitland [Setdown point: MRAG]