

EVACUATION DIAGRAM

MUSEUM OF ART & CULTURE 1A First Street, Booragul NSW 2284

IN CASE OF FIRE - Remember RACE.

- R**EMOVE PEOPLE FROM THE IMMEDIATE DANGER AREA
Assist others, particularly those that may be mobility impaired, to the Emergency Assembly Area.
Ensure exits and exit routes are not obstructed.
- A**LERT OCCUPANTS AND RAISE THE ALARM
Notify staff as soon as possible. Call the fire brigade (dial 000).
- C**ONFINE THE SMOKE AND FIRE
Close (but do not lock) doors and windows where safe & practicable.
- E**XTINGUISH THE FIRE / EVACUATE
If trained and if safe to do so, operate fire extinguishers/fire hose reels (work in pairs), otherwise evacuate.



Remove people from the immediate danger area



dial 000

CLOSE DOORS AND WINDOWS








AIM AT BASE OF FIRE





LEGEND


 DCP EXTINGUISHER


 CO2 EXTINGUISHER


 FIRE BLANKET


 FIRE HOSE REEL


 FIP FIRE INDICATOR PANEL


 EVACUATION CALL POINT


 EMERGENCY CALL POINT


 MP MIMIC PANEL


 WIP (EMERGENCY PHONE)


 FIRST AID KIT

 FIRE HYDRANT

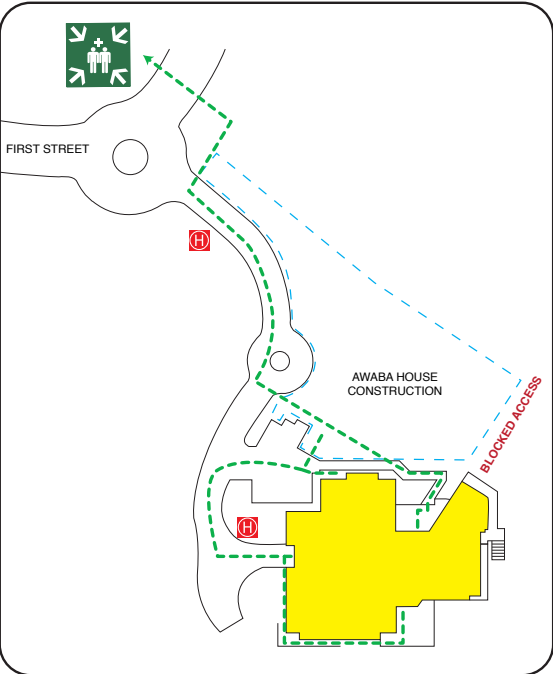
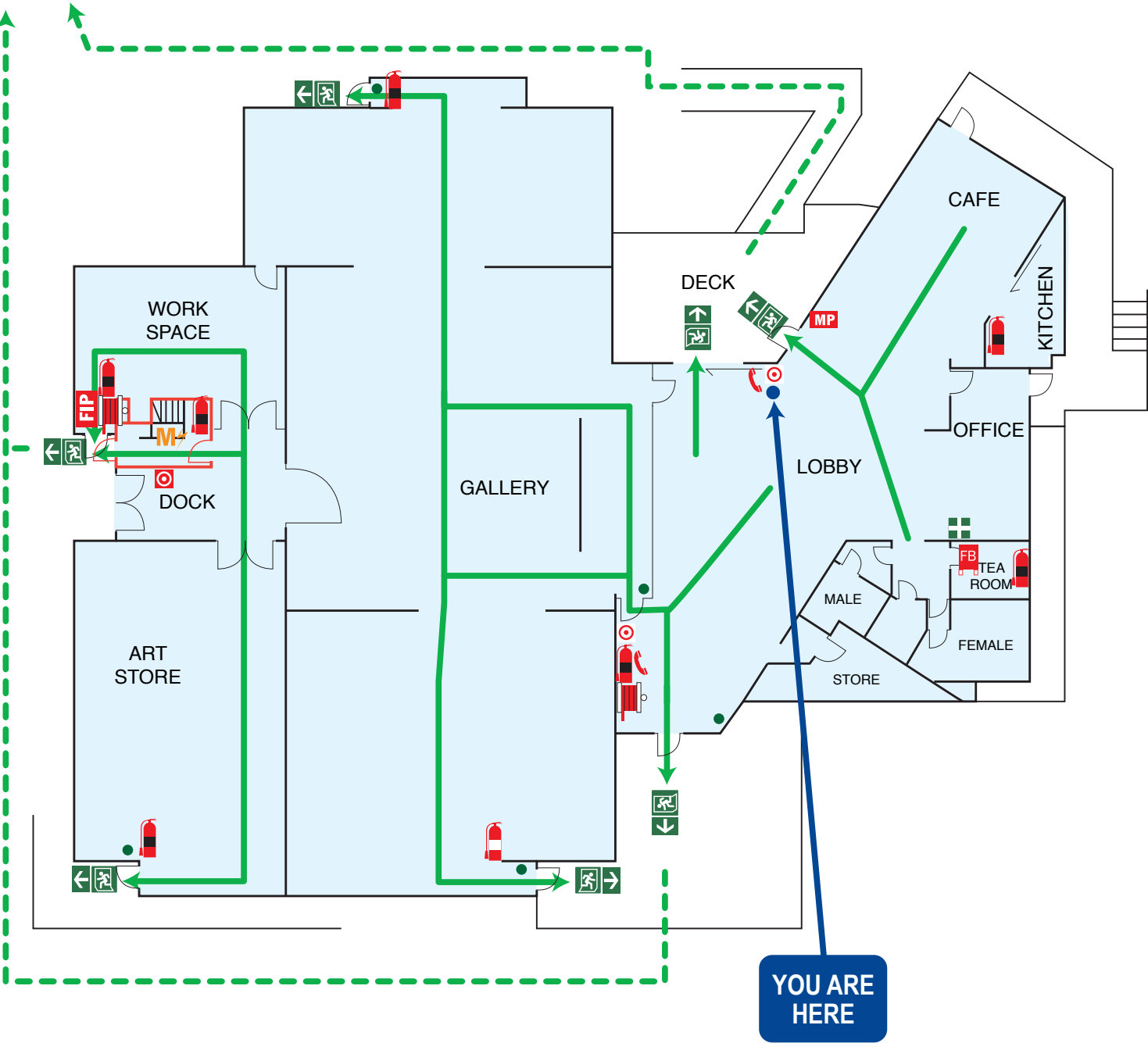
 DOOR RELEASE

 MAIN SWITCHBOARD

 EXIT

 ASSEMBLY AREA

To Assembly Area
See Below Map



000
EMERGENCY



PLAN PREPARED TO AS3745-2010
DATE ISSUED 12/08/2024
IF NO CHANGES OCCUR THIS
PLAN IS VALID TO AUGUST 2029

BELMONT HOSPITAL (02) 4923 2000
JOHN HUNTER HOSPITAL (02) 4921 3000
POISONS INFORMATION 131126

TOTAL
fire solutions
1800 807 740

EVACUATION DIAGRAM

MUSEUM OF ART & CULTURE 1A First Street, Booragul NSW 2284

IN CASE OF FIRE - Remember RACE.

- R**EMOVE PEOPLE FROM THE IMMEDIATE DANGER AREA
Assist others, particularly those that may be mobility impaired, to the Emergency Assembly Area.
Ensure exits and exit routes are not obstructed.
- A**LERT OCCUPANTS AND RAISE THE ALARM
Notify staff as soon as possible. Call the fire brigade (dial 000).
- C**ONFINE THE SMOKE AND FIRE
Close (but do not lock) doors and windows where safe & practicable.
- E**XTINGUISH THE FIRE / EVACUATE
If trained and if safe to do so, operate fire extinguishers/fire hose reels (work in pairs), otherwise evacuate.



LEGEND

DCP EXTINGUISHER

CO2 EXTINGUISHER

FIRE BLANKET

FIRE HOSE REEL

FIRE INDICATOR PANEL

EVACUATION CALL POINT

EMERGENCY CALL POINT

MIMIC PANEL

WIP (EMERGENCY PHONE)

FIRST AID KIT

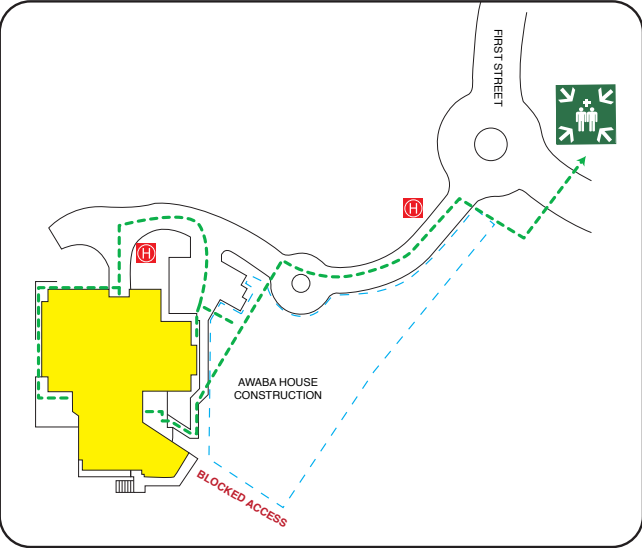
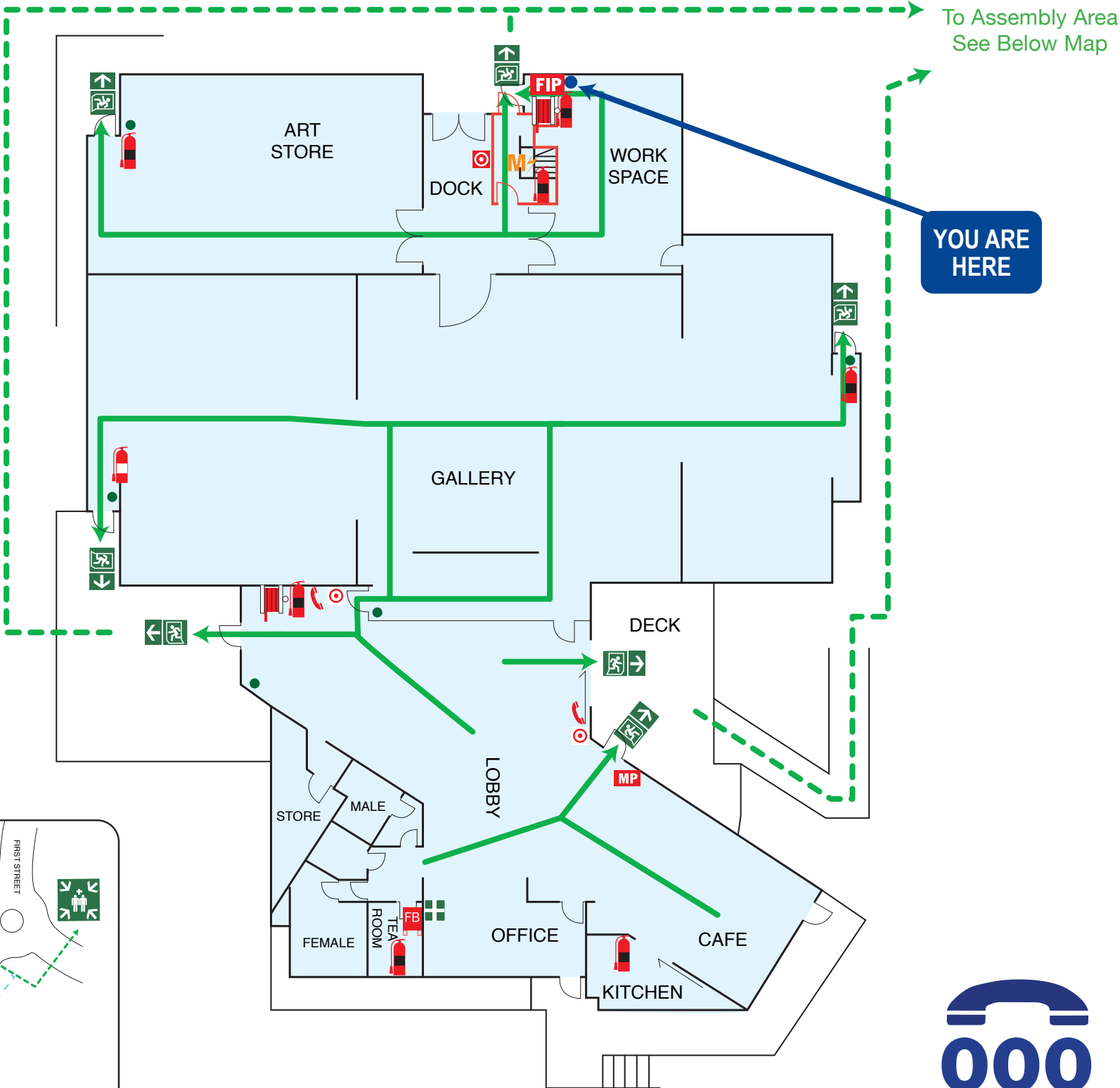
FIRE HYDRANT

DOOR RELEASE

MAIN SWITCHBOARD

EXIT

ASSEMBLY AREA



PLAN PREPARED TO AS3745-2010
DATE ISSUED 12/08/2024
IF NO CHANGES OCCUR THIS
PLAN IS VALID TO AUGUST 2029

BELMONT HOSPITAL (02) 4923 2000
JOHN HUNTER HOSPITAL (02) 4921 3000
POISONS INFORMATION 131126

