

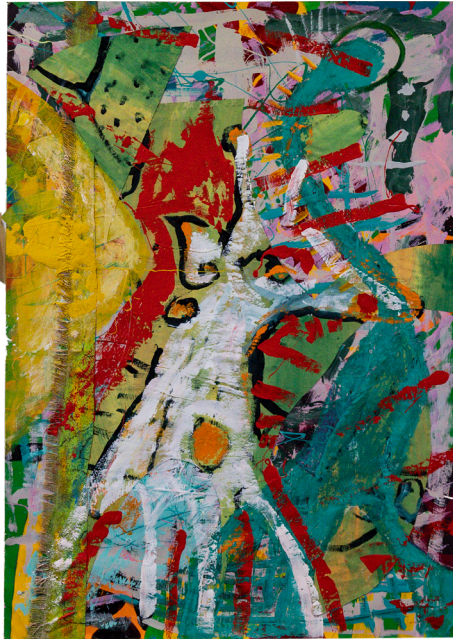
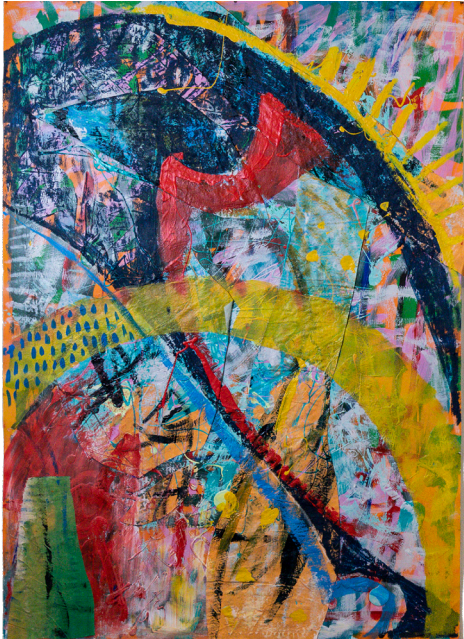
BRAD MCKINNON WARNERS BAY HIGH SCHOOL

What is a Giraffe?

canvas, paper, mesh, acrylic paint, calico, dimensions variable

MΔC

Museum of Art and Culture
Lake Macquarie



ARTSPACE at home

We have developed ART SPACE AT HOME to give you ideas for making art and playing together.



IMAGINATIVE PLAY

Make a cubby house for an alpaca or giraffe to live in, using tablecloths and sheets. Use different textures to stimulate your child's senses.

You can use a torch and small toys to create a shadow puppet play on the cubby wall. You can let your child take the lead role and provide props to enrich their play.

Try presenting a problem to fix. How will an alpaca or giraffe fit in the cubby? What will it eat for morning tea?



ANOTHER IDEA

Find or draw pictures of birds and animals with long necks or unusual features. How are they different? What makes them the same? Write a short story with what you have discovered.

ARTMAKING WHAT YOU NEED

- Paper or cardboard box cut into a rectangle
- White wax crayon or household candle
- Coloured crayons
- Water-based paint or food colouring in water

INSTRUCTIONS

- 1 Find an image of a giraffe or another unique animal
- 2 Use your white crayon or candle to draw shapes, lines, and patterns that resemble the animal
- 3 Lightly wet the page all over with a clean brush
- 4 Add colour to see the magic crayon/candle drawing appear



BRAD MCKINNON

WATCH
INTERVIEW



ARTIST STATEMENT

'What is a Giraffe?' Brad thinks giraffes are unique and that's why he decided to paint them.

'Unique' means different or 'one of a kind'. He also thinks every human is unique.

He would like us to celebrate our differences, whether it's the way we look or our cultural backgrounds. Brad's painting is abstract.

It doesn't look like a photo of a giraffe, but he has used colour, line and shape to create an impression of one.

MΔC

Museum of Art and Culture
Lake Macquarie

**Enjoy a children's
story book relating to
this activity**

Please note you will need a Lake
Mac Library barcode or card
number to access.

